



COVID-19 Epidemiology Report

6th September 2021

Note:

The data in this report are extracted from NSS Test and Protect Data Virtualisation tables that record case management information and data collected by NHS Scotland laboratories and UK Government Testing.

Lateral Flow Tests (LFT) are not included.

Cases are assigned to geographies using the postcode recorded at the time of testing or, if that is not available, by the postcode of usual residence derived from the Community Health Index database.

The time necessary to process and submit testing data means that tests carried out in the most recent two to three days will be incomplete. Public Health Scotland estimate that 90% of tests carried out are reported within two days. Positive results can be subject to retest and numbers may therefore change for this reason. The seven-day figures in the report are presented with a lag to try and ensure that a complete period of data are provided.

Summary overview of positive cases

06/09/2021



Week ending

03/09/2021

Confirmed new positive case rate per 100,000 population of COVID-19 over 7 days

	Current week		Change from previous week	
	Number of cases	7 day rate per 100,000	Number of cases	7 day rate per 100,000
NHS Highland	2146	668.8	365	113.8
Argyll & Bute	688	805.3	40	46.8
Highland	1458	619.3	325	138.0

Testing rates vary across the week and data for the most recent three days will be partially complete.

Recent positive results may be subject to change as a result of re-testing

Includes testing undertaken in NHS Scotland laboratories and UK Government Regional Testing Centre laboratories (including Drive Through Centres and Mobile Units, and Home Testing).

NHS Highland Public Health Intelligence Team

NHS Highland

Number of new positive cases of COVID-19

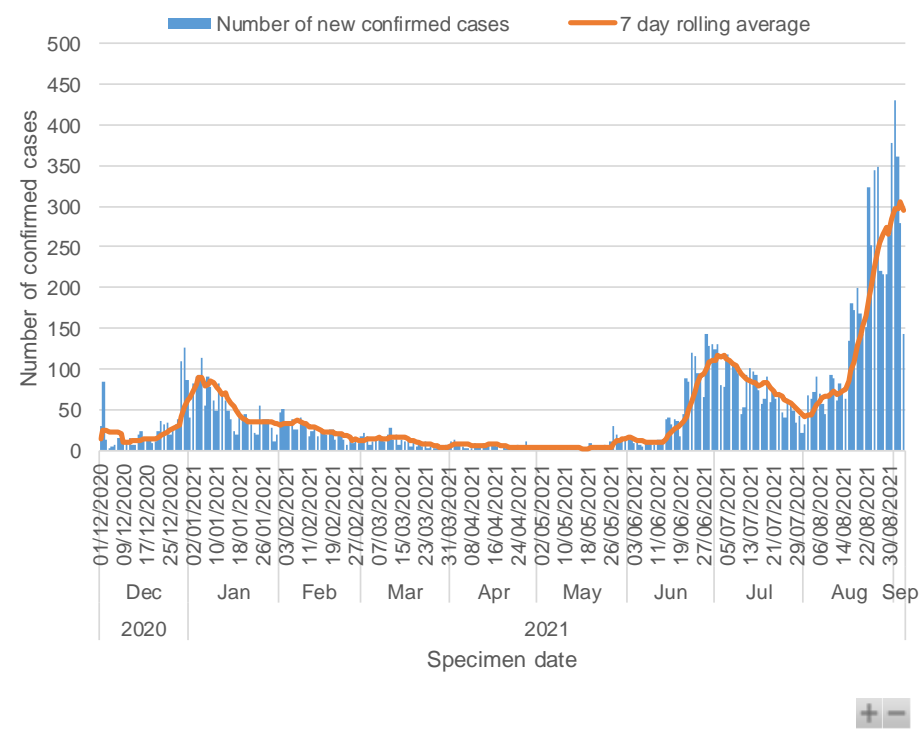


Dec 1, 2020 - Sep 4, 2021

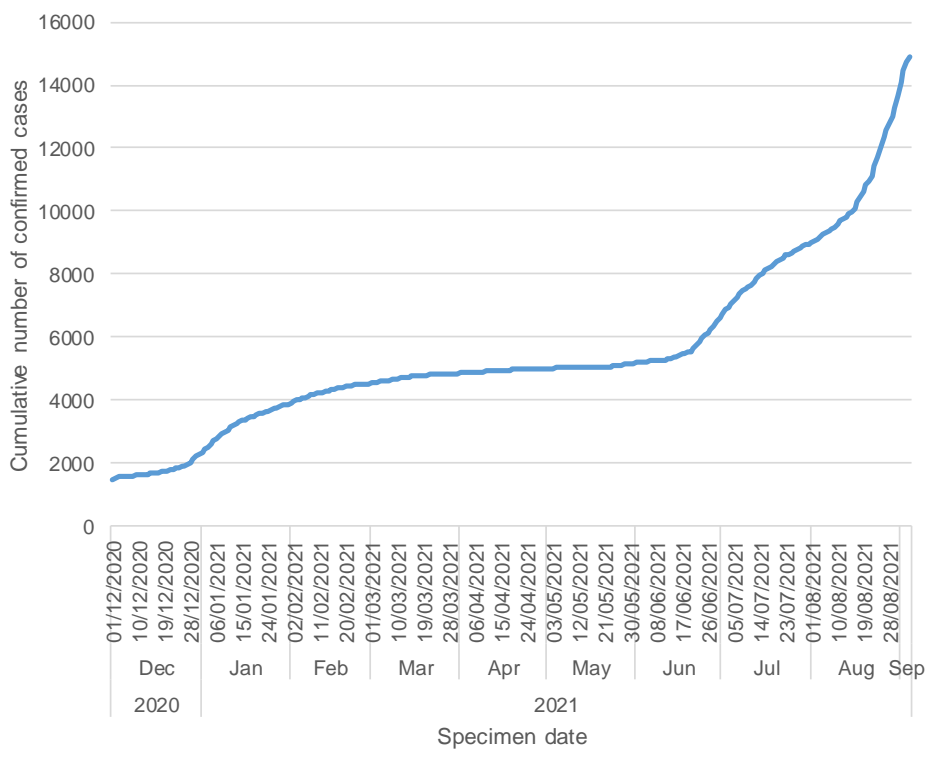
MONTHS ▾



Number of confirmed cases



Cumulative number of confirmed cases



Testing rates vary across the week and data for the most recent three days will be partially complete

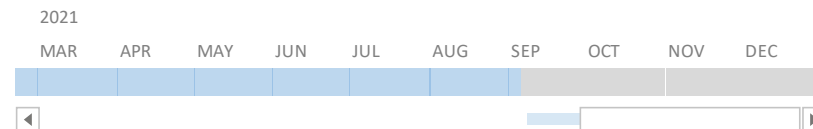
NHS Highland

Number and rates of new cases of COVID-19 over 7 days

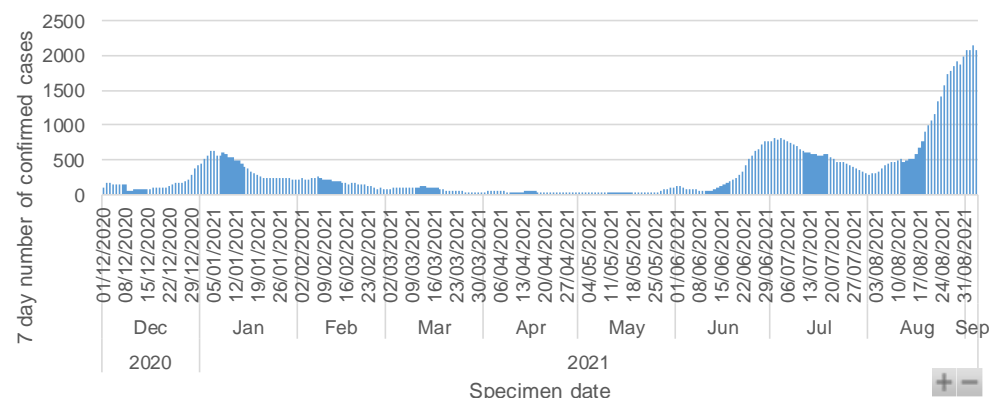


Dec 1, 2020 - Sep 4, 2021

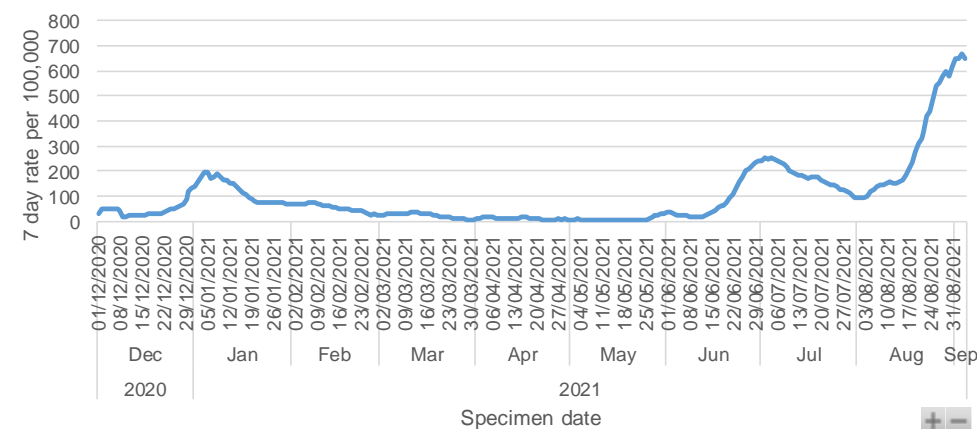
MONTHS ▾



Number of cases



Rates per 100,000 population



Select week ending date

Date

05/09/2021

04/09/2021

03/09/2021

02/09/2021

01/09/2021

31/08/2021

	Week beginning	Week ending	Number of cases	7 day rate per 100,000
Selected	28/08/2021	03/09/2021	2146	668.8
Previous	21/08/2021	27/08/2021	1781	555.1

Testing rates vary across the week and data for the most recent three days will be partially complete

Number and rates of new cases of COVID-19 over seven days

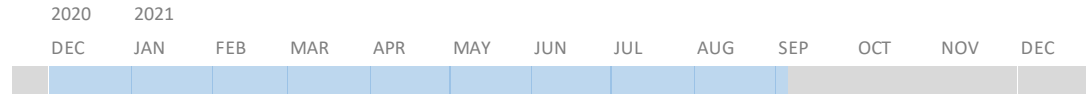
NHS Highland Local Authority Areas
All ages



Date

Dec 1, 2020 - Sep 4, 2021

MONTHS ▾

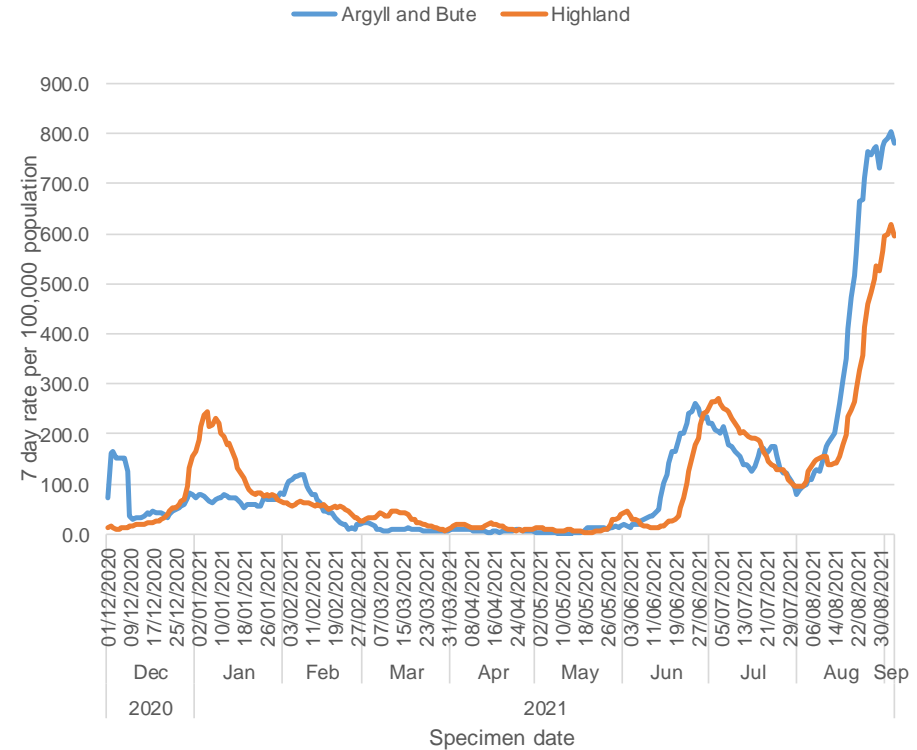
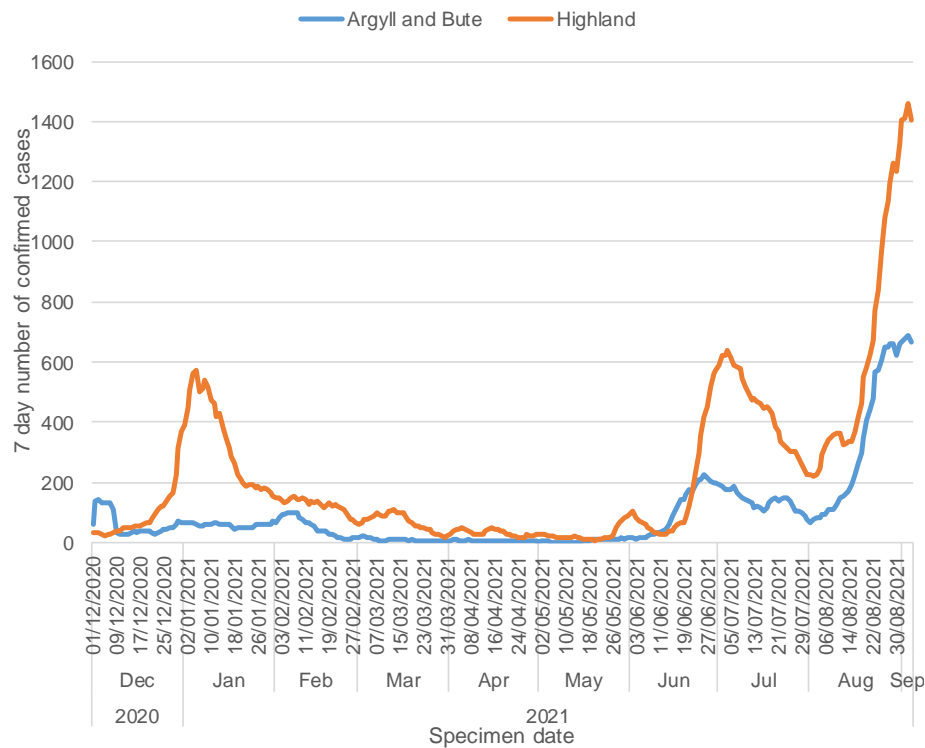


Argyll and Bute

Highland

Number of cases

Rates per 100,000 population



Testing rates vary across the week and data for the most recent three days will be partially complete

Data source: NSS Test and Protect Data Virtualisation Layer, NHS Highland BI Data Warehouse

NHS Highland Public Health Intelligence Team

Number and rates of new cases of COVID-19 over seven days

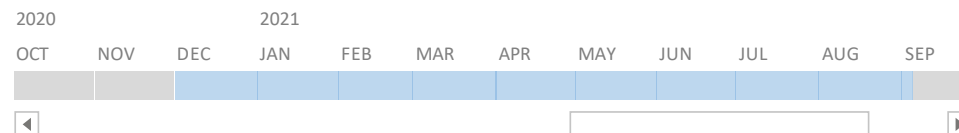
NHS Highland
Broad age category



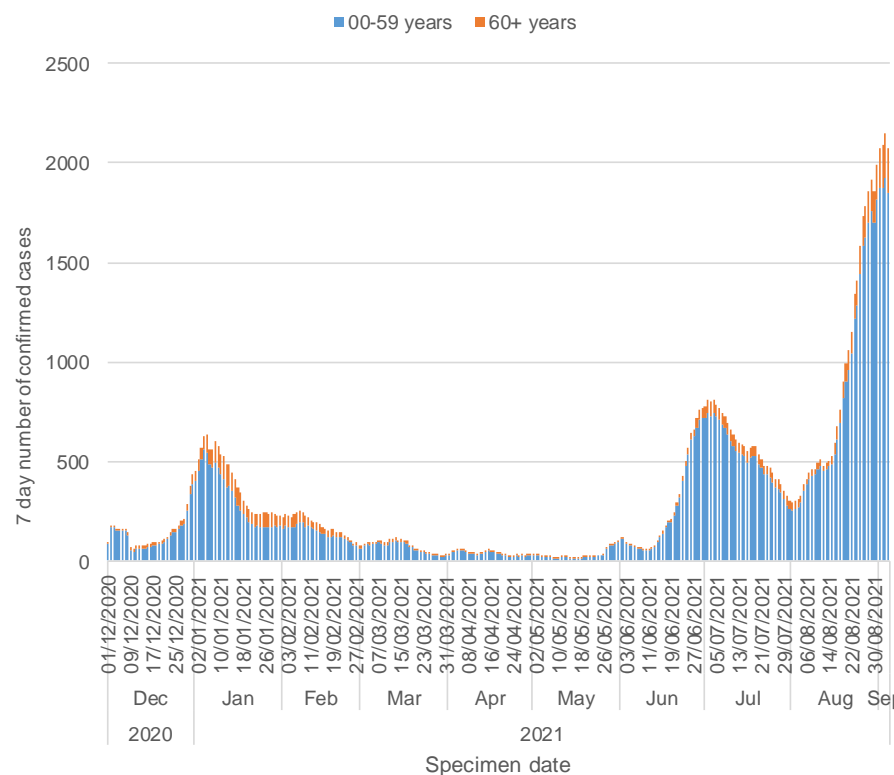
Date

Dec 1, 2020 - Sep 4, 2021

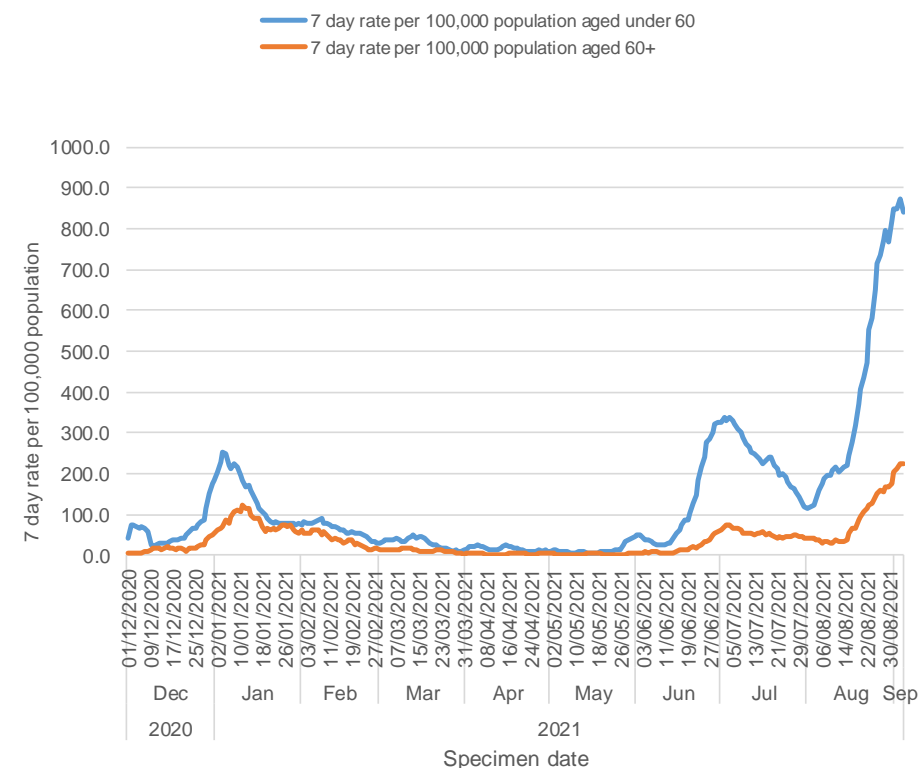
MONTHS ▾



Number of cases



Rates per 100,000 population



Testing rates vary across the week and data for the most recent three days will be partially complete

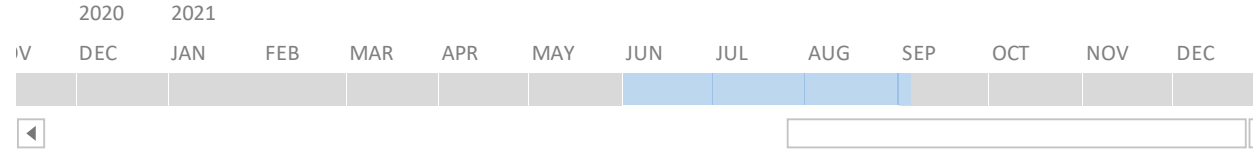
Rate of positive cases of COVID-19 per 100,000 population over seven days by age

NHS Highland Local Authority Areas

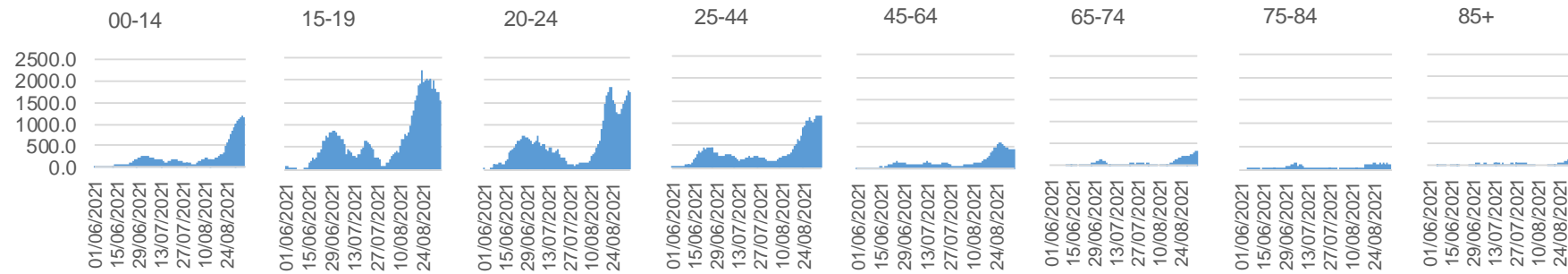
Broad age category

Jun 1 - Sep 4, 2021

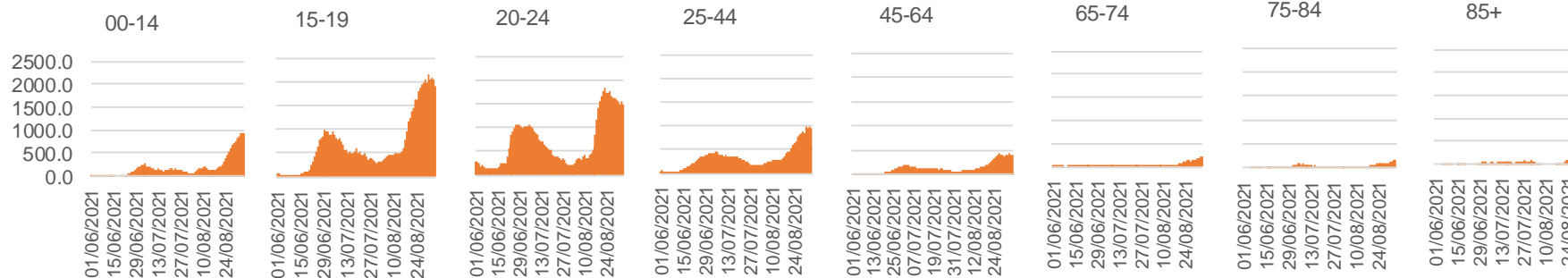
MONTHS ▼



Argyll and Bute



Highland



Testing rates vary across the week and data for the most recent three days will be partially complete

Data source: NSS Test and Protect Data Virtualisation Layer, NHS Highland BI Data Warehouse

NHS Highland Public Health Intelligence Team

Number and rates of new cases of COVID-19 over fourteen days

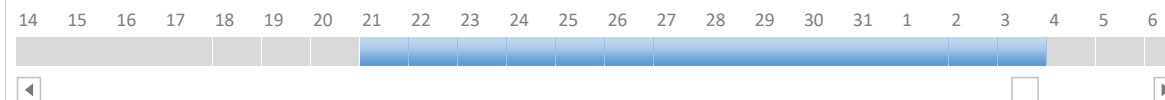
NHS Highland

Age and gender

Aug 21 - Sep 3, 2021

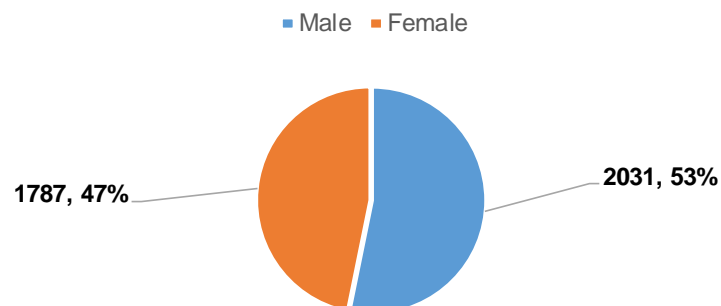
AUG 2021

SEP 2021

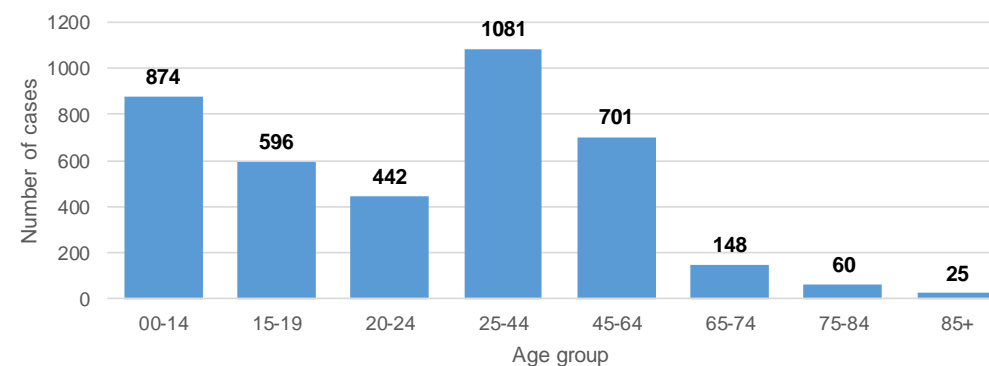


First date in selection	21/08/2021
Last date in selection	03/09/2021
Number of days	14

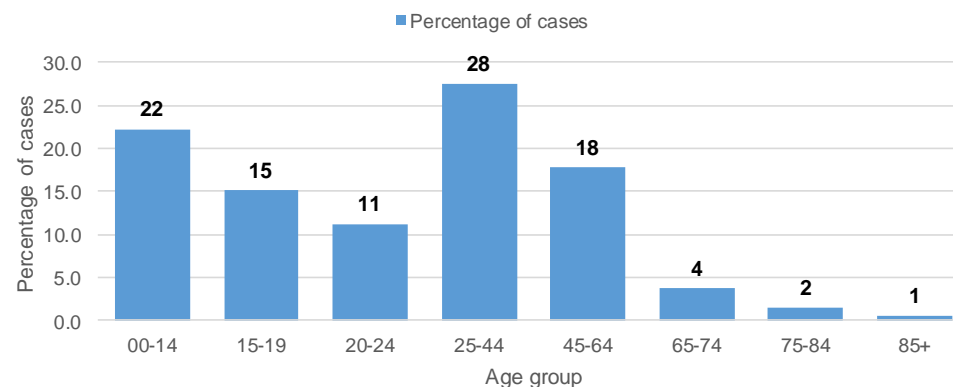
Number and Percentage of confirmed cases of COVID-19 between 21/08/21 and 03/09/21



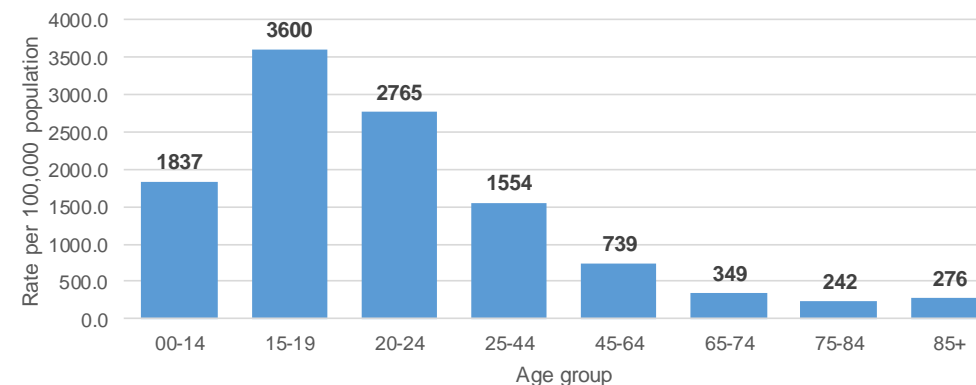
Number of confirmed cases of COVID-19 between 21/08/21 and 03/09/21



Percentage of confirmed cases of COVID-19 between 21/08/21 and 03/09/21

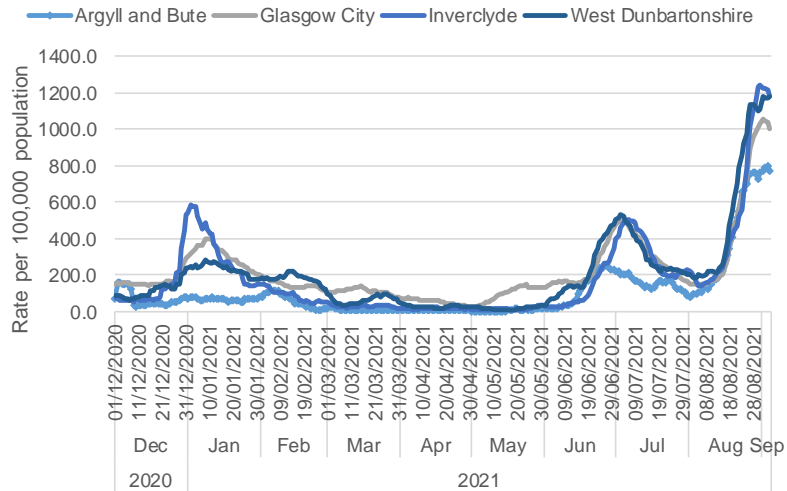


Rate of COVID-19 cases per 100,000 population between 21/08/21 and 03/09/21



Confirmed new case rate per 100,000 population over 7 days

Local Authority Areas (selected)

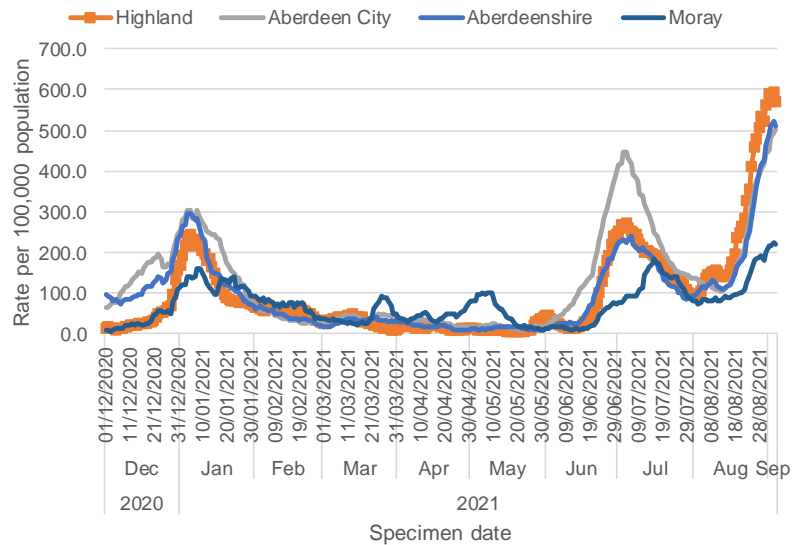
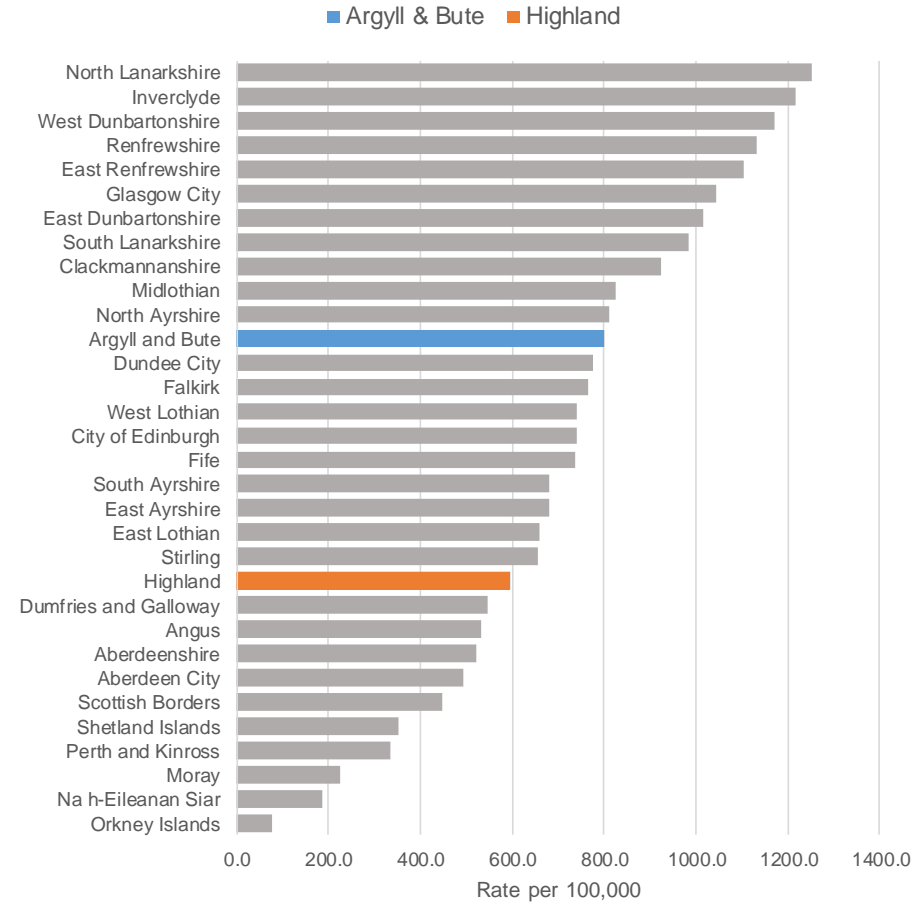


05/09/2021

04/09/2021

03/09/2021

7 day rate per 100,000 population for the week ending 03 Sep 2021



Testing rates vary across the week and data for the most recent three days will be partially complete

NHS Highland Community Partnerships

Number and rates of new cases over seven days



Select week ending date

05/09/2021

04/09/2021

03/09/2021

02/09/2021

^

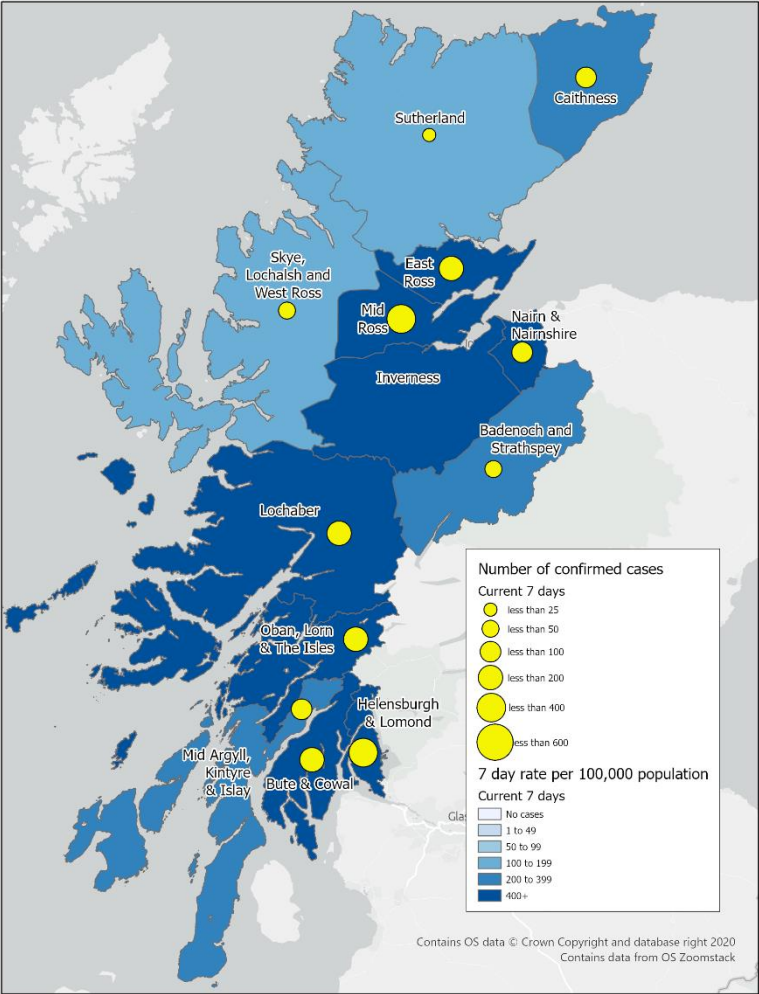
▼

Testing rates vary across the week and data for the most recent three days will be partially complete.

	Total number of confirmed cases over the 7 days (28/08/21 to 03/09/21)	Total number of confirmed cases over the previous 7 days (21/08/21 to 27/08/21)	Change in number of cases	Incidence rate per 100,000 population (28/08/21 to 03/09/21)
NHS Highland	2146	1781	+	669
Badenoch and Strathspey	40	93	-	287
Caithness	68	42	+	270
East Ross	138	68	+	622
Inverness	646	491	+	791
Lochaber	165	219	-	838
Mid Ross	294	128	+	1089
Nairn & Nairnshire	55	37	+	409
Skye, Lochalsh and West Ross	36	35	+	186
Sutherland	16	20	-	125
Highland	1458	1133	+	619
Cowal & Bute	155	206	-	775
Helensburgh & Lomond	273	273	nc	1062
Mid-Argyll, Kintyre & Islay	71	49	+	357
Oban, Lorn & The Isles	189	120	+	953
Argyll & Bute	688	648	+	805

nc = no change

Current Week



Confirmed cases of COVID-19 in the seven day period
28 August 2021 to 3 September 2021 by NHS Highland
Community Partnership

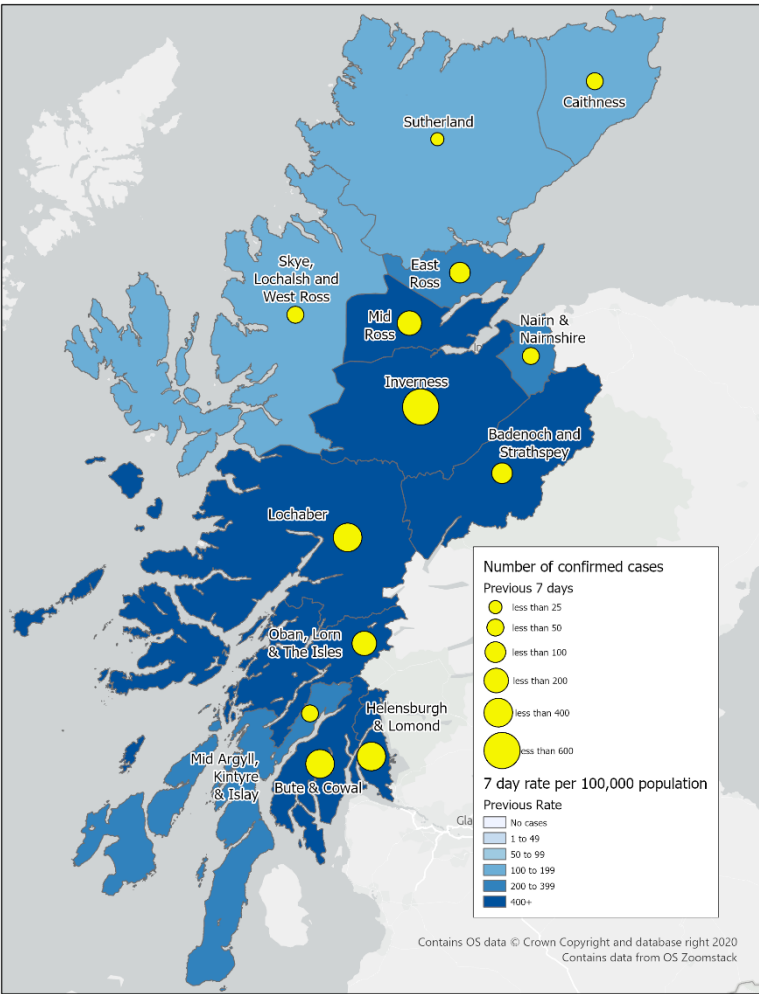


Directorate of Public Health
Public Health Intelligence Team
Larch House, Inverness

Date: September 2021

This map is reproduced from Ordnance Survey material with the permission of Ordnance Survey on behalf of the Controller of Her Majesty's Stationery Office.
© Crown copyright and database right. All rights reserved.
100010825 2021

Previous Week



Confirmed cases of COVID-19 in the seven day period
21 August 2021 to 27 August 2021 by NHS Highland
Community Partnership



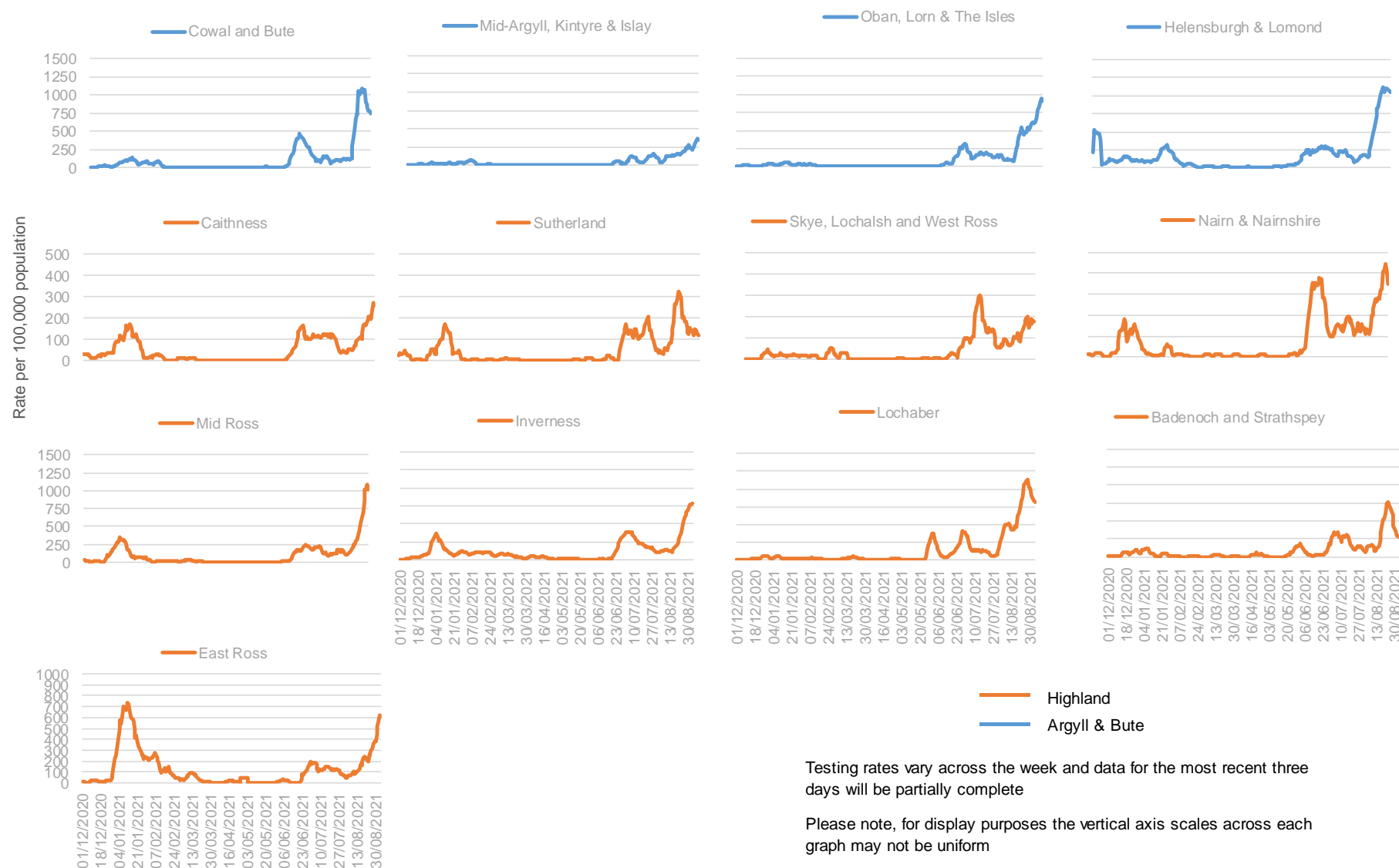
Directorate of Public Health
Public Health Intelligence Team
Larch House, Inverness

Date: September 2021

This map is reproduced from Ordnance Survey material with the permission of Ordnance Survey on behalf of the Controller of Her Majesty's Stationery Office.
© Crown copyright and database right. All rights reserved.
100010825 2021

NHS Highland Community Partnerships

Confirmed case rate per 100,000 population over seven days



NHS Highland Community Partnerships

Rates of new cases over seven days: 28/08/2021 to 03/09/2021



Select week ending date

Testing rates vary across the week and data for the most recent three days will be partially complete.

05/09/2021

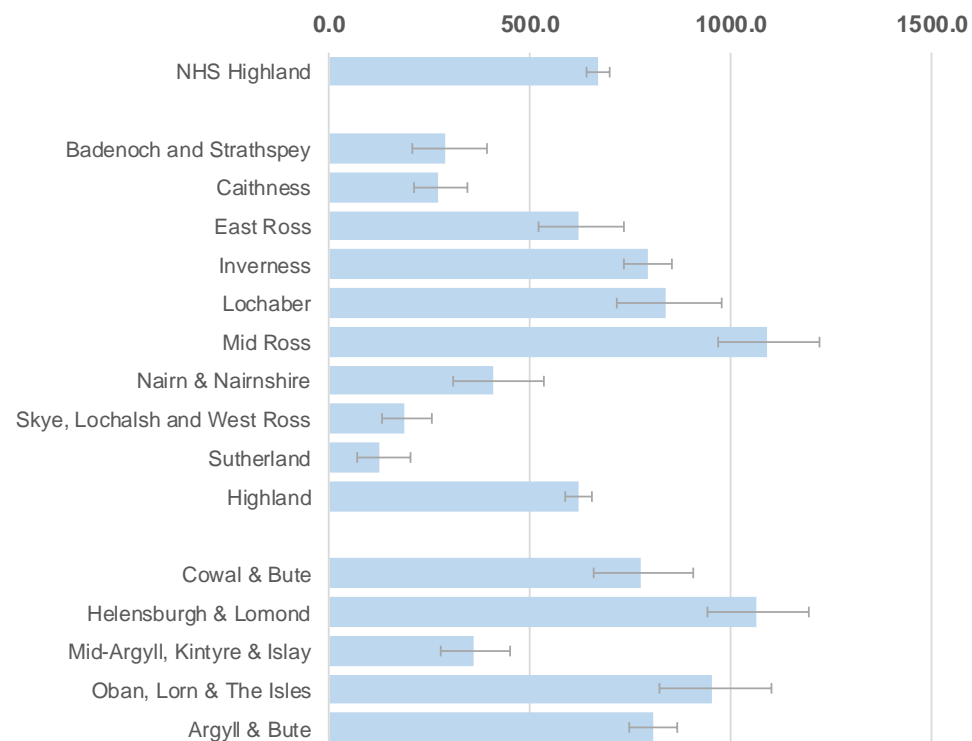
04/09/2021

03/09/2021

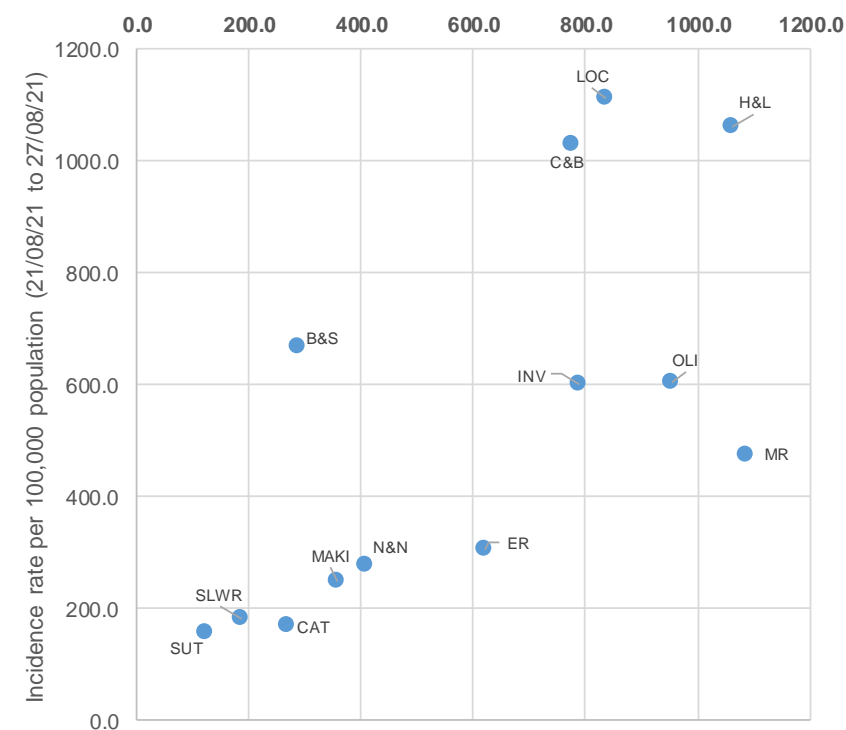
02/09/2021



Incidence rate per 100,000 population (28/08/21 to 03/09/21)

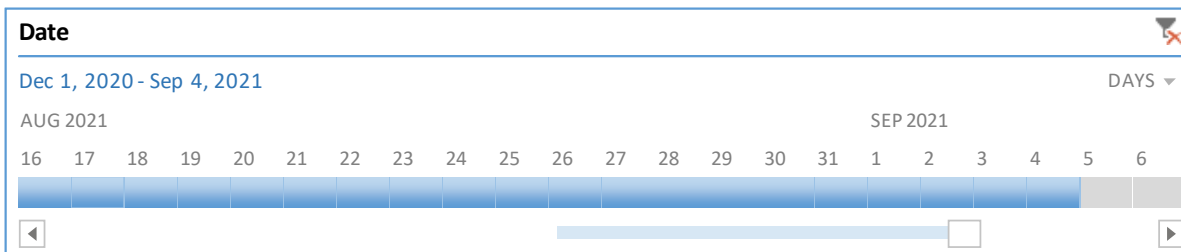


Incidence rate per 100,000 population (28/08/21 to 03/09/21)

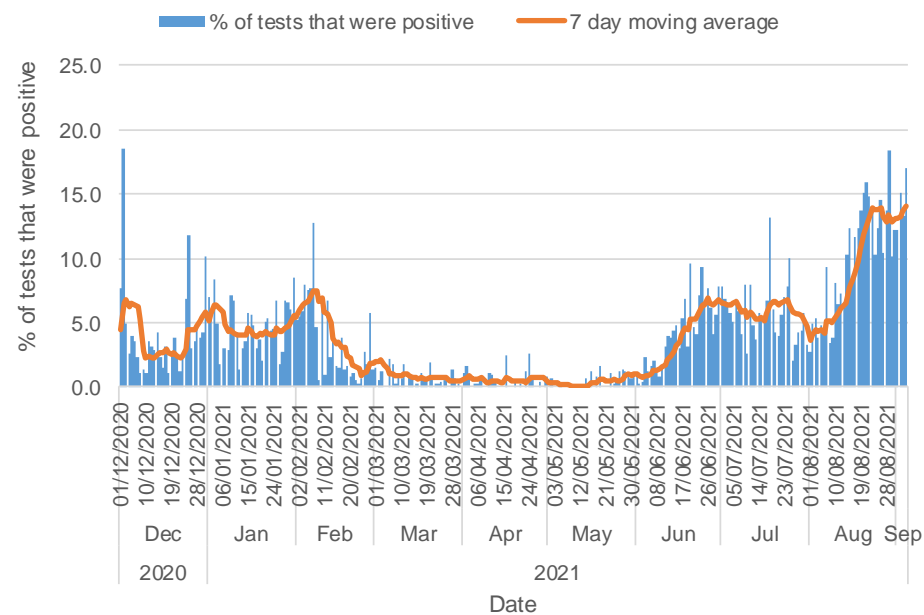


Test positivity rate

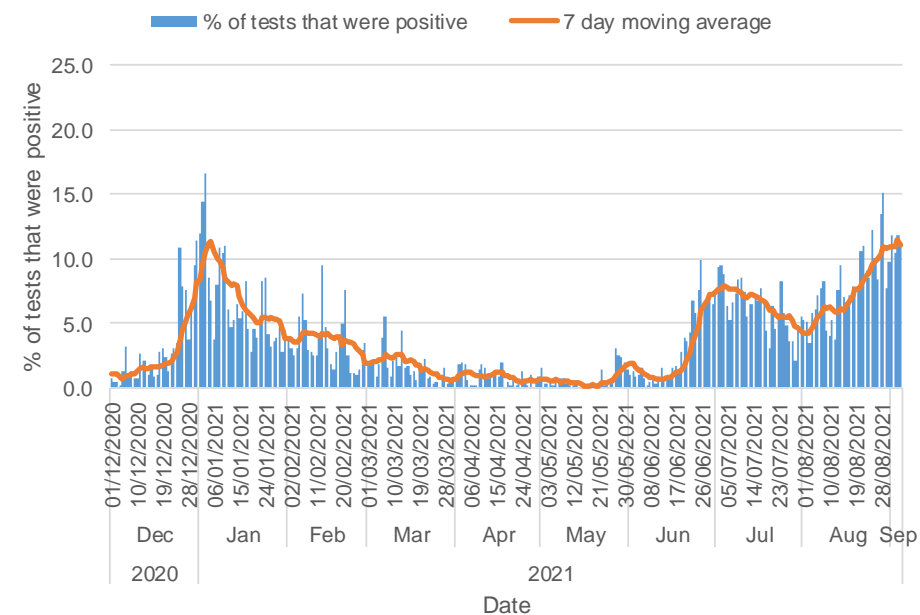
NHS Highland Local Authority Areas



Argyll & Bute



Highland



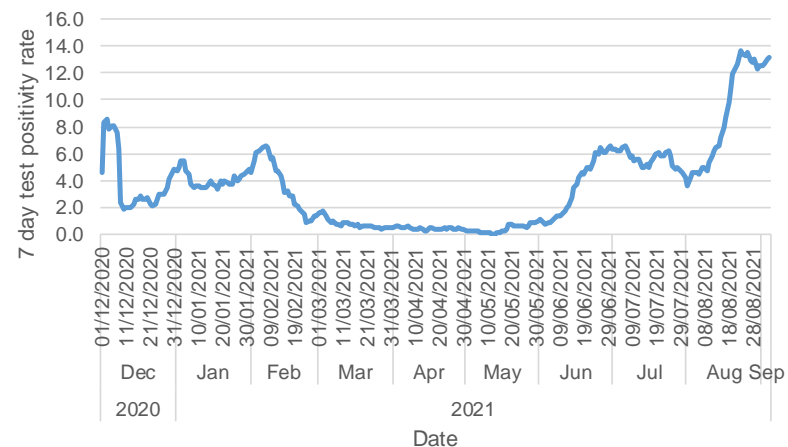
Test positivity rate is the number of newly reported positive tests divided by the total number of newly reported tests, in the specified time period, multiplied by 100.

Seven day test positivity rate

NHS Highland Local Authority Areas



Argyll and Bute



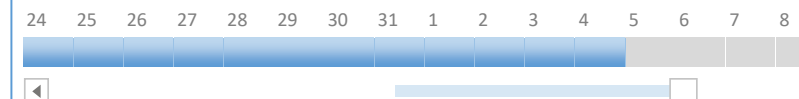
Date

Dec 1, 2020 - Sep 4, 2021

DAYS ▾

AUG 2021

SEP 2021



Select week ending date

05/09/2021	04/09/2021	03/09/2021
02/09/2021	01/09/2021	31/08/2021

Highland



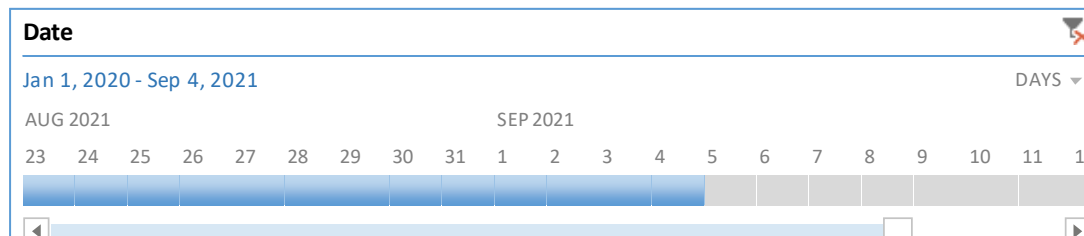
Week: 28/08/2021 to 03/09/2021

	Number of positive tests	Total number of tests	Test positivity rate (%)
Argyll and Bute	750	5757	13.0
Highland	1487	13592	10.9

Test positivity rate is the number of newly reported positive tests divided by the total number of newly reported tests, in the specified time period, multiplied by 100.

Confirmed deaths from COVID-19

NHS Highland Local Authority Areas

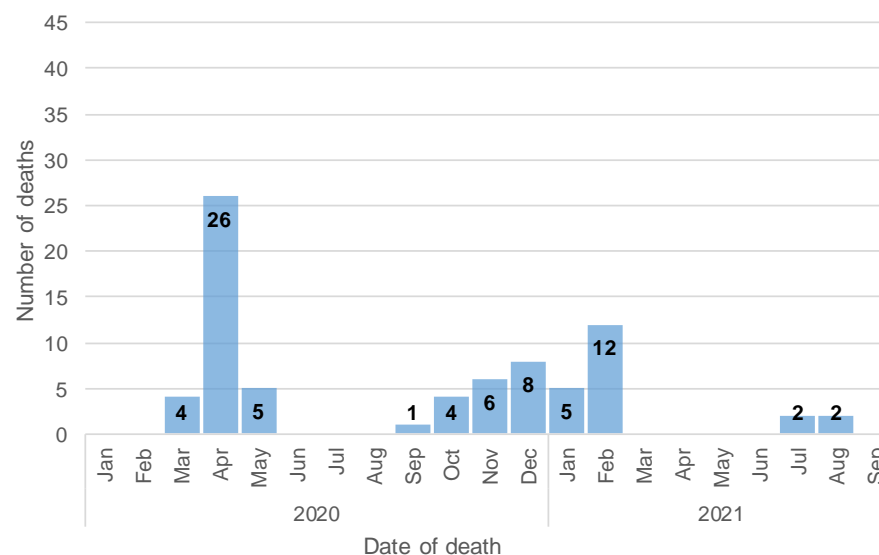


Argyll and Bute	Total number to date	75
	Total in selected period	75

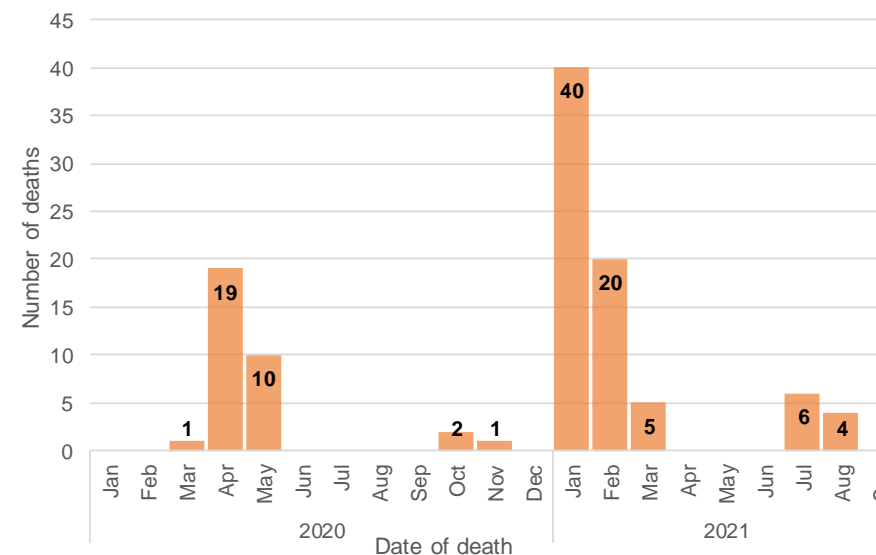
Highland	Total number to date	108
	Total in selected period	108

Deaths (COVID-19 confirmed) by date of death

Argyll and Bute



Highland

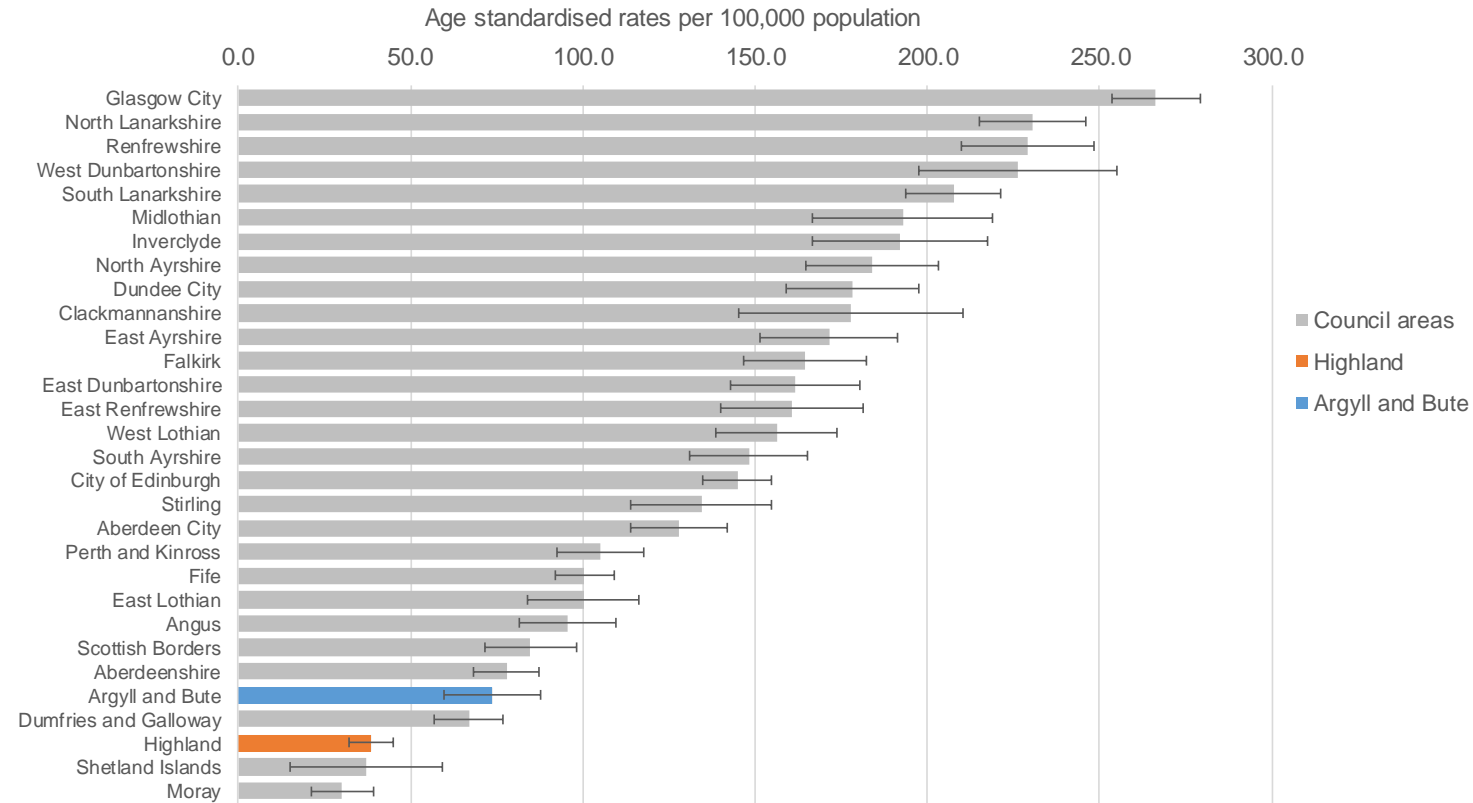


National Records of Scotland (NRS) deaths data linked to ECOSS testing data

Deaths refer to the total number of individuals who died within 28 days of their first laboratory confirmed report of COVID-19 infection and whose death was registered with NRS.

Age standardised rates for deaths involving COVID-19 in Council areas

1st March 2020 to 31st July 2021



Age-standardised mortality rates are presented per 100,000 people and standardised to the 2013 European Standard Population. Age-standardised mortality rates allow for differences in the age structure of populations and therefore allow valid comparisons to be made between geographical areas, the sexes and over time.

The lower and upper 95% confidence limits have been provided. These form a confidence interval, which is a measure of the statistical precision of an estimate and shows the range of uncertainty around the estimated figure. Calculations based on small numbers of events are often subject to random fluctuations. As a general rule, if the confidence interval around one figure overlaps with the interval around another, we cannot say with certainty that there is more than a chance difference between the two figures.

Cause of death was defined using the International Classification of Diseases, Tenth Revision (ICD-10) codes U07.1 and U07.2. Rates include deaths where coronavirus (COVID-19) was the underlying cause or was mentioned on the death certificate as a contributory factor.

Figures are for deaths occurring between 1 March 2020 and 31st July 2021 and only include deaths that were registered by 11th August 2021.